

PANEL CHARTS

1) CREATE ALL PANEL NUMBERS AND MAN-HRS FROM CONTROL FILES

Zenner (Evaluation)
CAFAM64 System - Main Menu

Network: Y
JD- 04/01/2012

| | | | | | | | |
|-----------|-----------|-----------|-----------|---------|-----------|-----------|------|
| MATERIALS | TECH SVCS | FLT TIMES | JOB CNTRL | BILLING | UTILITIES | CUSTOMENU | EXIT |
|-----------|-----------|-----------|-----------|---------|-----------|-----------|------|

Repair Files
Archive/Prune Files
Set-up CAFAM Users
Settings & Parameters
Control Files

CAFAM System

NOTES
CTRL+Y = Add a new line
CTRL+T = Delete a line

- Panel Look-Up File -

| Panel | Descr | Man_hrs |
|--------|----------------------|---------|
| 445AX | LH Wing inner | 3.00 |
| 475AZ | LH Gear hinge | 2.75 |
| 645AX | RH Wing inner | 3.00 |
| 675AZ | RH Gear hinge | 2.75 |
| 767AC | Nose Gear bay | 2.00 |
| 775AZ | Nose RH entry | 2.50 |
| B78A3 | Nose Fuselage LH | 1.78 |
| B78N3 | Nose Fuselage RH | 1.78 |
| B79B3 | Mid section Fuslg LH | 2.00 |
| B79C3 | Mid section Fuslg RH | 2.00 |
| K121B2 | Rear Fuselg | 2.00 |

2) ENTER PANELS APPLICABLE TO CALL-UP USING [PANEL] BUTTON

Zenner (Evaluation)
CAFAM64 System - Main Menu

Network: Y
JD- 04/01/2012

| | | | | | | | |
|-----------|-----------|-----------|-----------|---------|-----------|-----------|------|
| MATERIALS | TECH SVCS | FLT TIMES | JOB CNTRL | BILLING | UTILITIES | CUSTOMENU | EXIT |
|-----------|-----------|-----------|-----------|---------|-----------|-----------|------|

Aircraft File
Call-ups

CAFAM System

| | |
|--------------------------------|--------------------|
| Call-Up Ref C560XL-051203 | ATA Chap 05 |
| Heading PHASE 3 | A/C Type C560XL MM |
| Sched Hrs 300 | Mandatory |
| Calndr days 730 or Due By: / / | Action INSP |
| Ldg/Cyc/Prs N/A | Labr m/hr 0.00 |

| | |
|---------------------------------------------------------------------------------------------|--------------------------------------------------------|
| W/Sht info Carry out Phase 3 Inspection iaw Manufacturers Approved Maintenance Manual | W/Sheet Trade Group call-up by Duplicate Insp? N |
| Ref also refers | |

Created by FN
14/06/2009

Rev No
Rev dt / /

Exit Edit Delete TaggedTo Prev Next MemoNotes Effectivity **Panels**

ON PRESSING [PANEL] BUTTON YOU WILL BE PRESENTED WITH SCREEN TO POPULATE THE PANELS APPLICABLE TO THE CALL-UP USING THE POP-UP LOOK-UP FILE THAT WAS CREATED EARLIER

Zenner (Evaluation) Network:Y
CAFAM64 System-Main Menu JD- 04/01/2012

MATERIALS TECH SVCS FLT TIMES JOB CNTRL BILLING UTILITIES CUSTOMMENU EXIT

CAFAM System

| | | | |
|-------------|--------------------|-----------|-----------|
| Call-Up Ref | C560XL-051203 | ATA Chap | 05 |
| Heading | PHASE 3 | A/C Type | C560XL MM |
| Sched Hrs | 300 | Mandatory | |
| Calndr days | 730 or Due By: / / | Action | INSP |
| Ldg/Cyc/Prs | N/A | Labr m/hr | 0.00 |

W/Sht info
Carry out Phase 3 Inspection iaw Manufacturers
Approved Maintenance Manual

W/Sheet Trade
Group call-up by
Duplicate Insp? N

Enter/Edit Panel Number(s) for C560XL-051203 ** [Ctrl+Y=Add, Ctrl+T=Delete] **

| Panel | Descr | Man_hrs |
|-------|---------------|---------|
| 767AC | Nose Gear bay | 2.00 |
| | | 0.00 |

14/0

Panel Numbers Look-up -

| Panel | Descr | Man_hrs |
|--------|----------------------|---------|
| 475AZ | LH Gear hinge | 2.75 |
| 645AX | RH Wing inner | 3.00 |
| 675AZ | RH Gear hinge | 2.75 |
| 767AC | Nose Gear bay | 2.00 |
| 775AZ | Nose RH entry | 2.50 |
| B78A3 | Nose Fuselage LH | 1.78 |
| B78N3 | Nose Fuselage RH | 1.78 |
| B79B3 | Mid section Fuslg LH | 2.00 |
| B79C3 | Mid section Fuslg RH | 2.00 |
| K121B2 | Rear Fuselg | 2.00 |
| K78A3 | Tail area Fuselag | 4.50 |

3) PROVIDED THE CALL-UP IS LINKED

Zenner (Evaluation) Network:Y
CAFAM64 System-Main Menu JD- 04/01/2012

MATERIALS TECH SVCS FLT TIMES JOB CNTRL BILLING UTILITIES CUSTOMMENU EXIT

Aircraft File
Call-ups
Print Reports
Build Acft File
Defect Analysis
Module Replacemnt
Log Book Entry
Equipment Calib.
Tech Library

CAFAM64

Aircraft Maintenance Program

Forecasting CESSNA 560XL G-ABCD S/no: -5699

Job No 049251/HA

☒ Link this W/Sheet to Billing Task File
☐ Just Print this W/Sheet with no link to Billing

OK Cancel

AND PRINTED FROM TO THE JOB NUMBER AS A TASK...

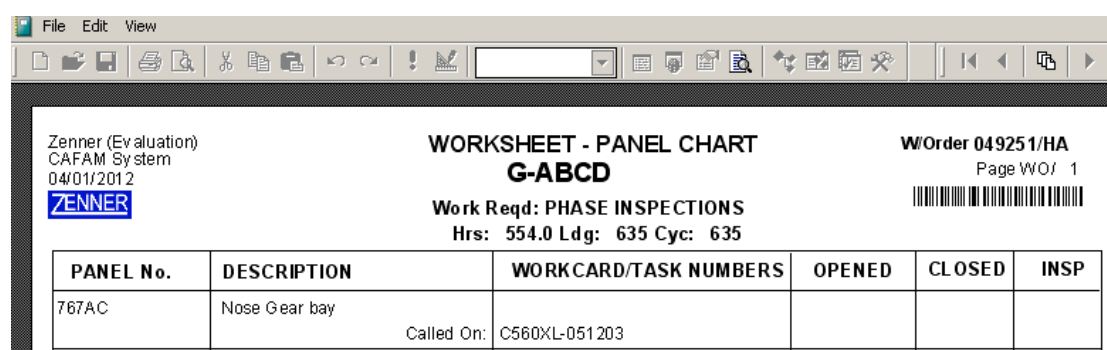
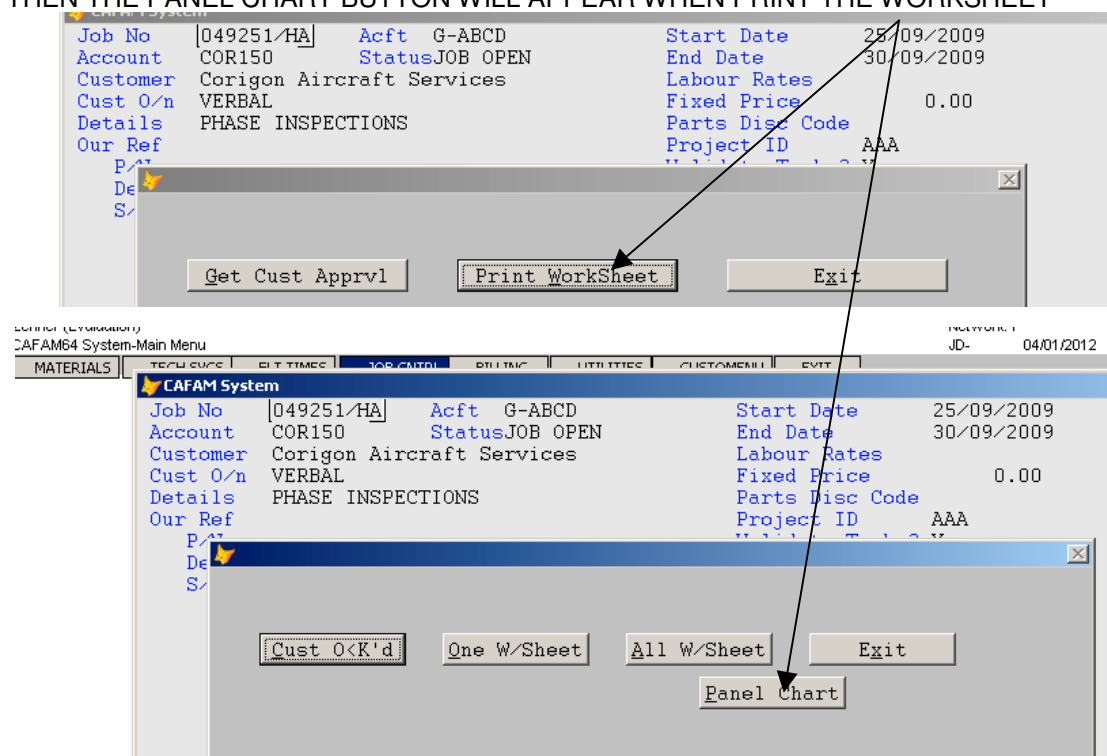
CAFAM System

| | | | | | |
|----------|---------------------------|-----------------|----------|-------------|------------|
| Job No | 049251/HA | Acft | G-ABCD | Start Date | 25/09/2009 |
| Account | COR150 | Status | JOB OPEN | End Date | 30/09/2009 |
| Customer | Corigon Aircraft Services | Labour Rates | | Fixed Price | 0.00 |
| Cust O/n | VERBAL | Parts Disc Code | | Project ID | AAA |
| Details | PHASE INSPECTIONS | | | | |
| Our Ref | | | | | |

P/Nr
Des
S/Nr

Exit Edit Cancel Suspend ReOpen Status Tasks Notes
Budget

THEN THE PANEL CHART BUTTON WILL APPEAR WHEN PRINT THE WORKSHEET



NOTES

1. The Panel Chart can ONLY be printed from the JOB CNTRL ("Time/Job") menu.
2. The data is transferred from the Call-up file by linking the Job Number and forms part of the [TASK] button under "Open/Edit Job" number.
3. Thus to print the Panel Chart go to
JOB CNTRL (formerly "Time/Job")
OPEN/EDIT JOB No.
4. Select the Job Number that the Forecast has been exported to
5. Select the [TASKS] button
6. Select "Print All WorkSheet"
7. The program will automatically check and detect if a Panel Chart has been found and offer the button [PANEL CHART] to print it
7. This button **does not appear** if no Panel Chart was found for the forecasted list of Tasks