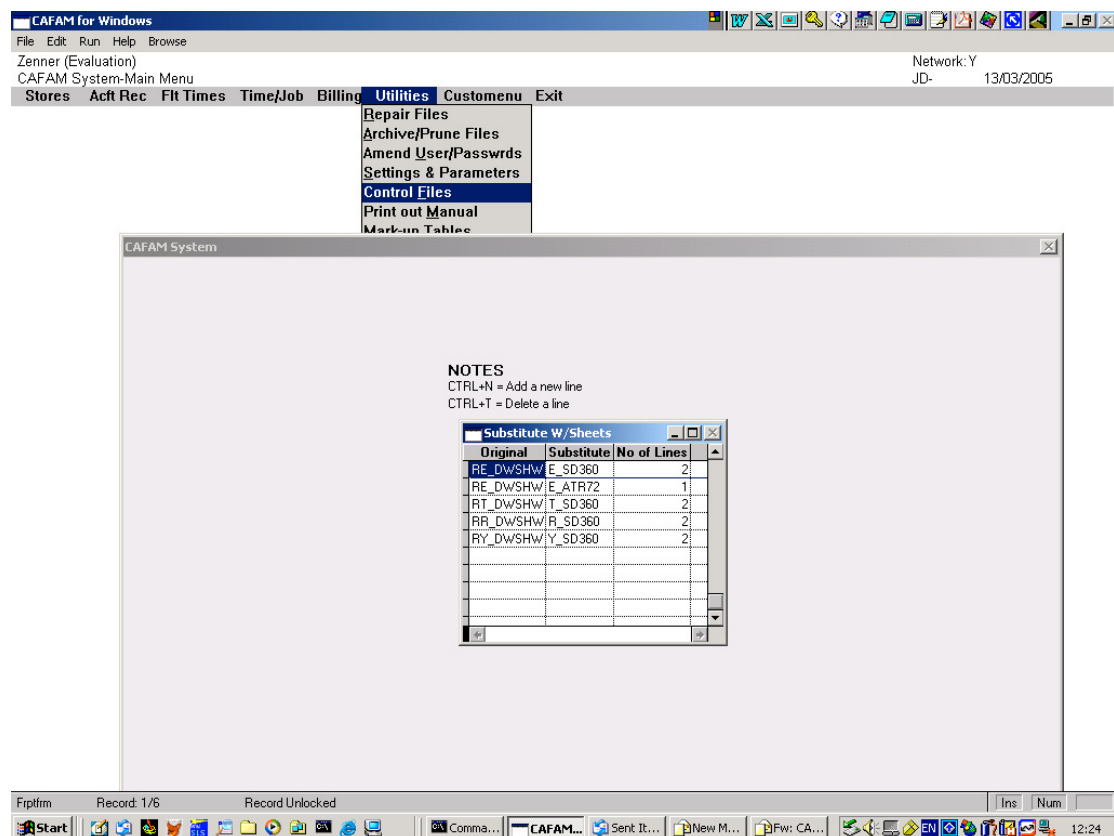


SETTING-UP SUBSTITUTE WORK-SHEETS



EXAMPLE ABOVE

ORIGINAL	SUBSTITUTE	w/SHEET
RE_DWSHW	E_SD360	Call-up worksheet for SD3-60 Aircraft
RE_DWSHW	E_ATR72	Call-up worksheet for ATR72 Aircraft
RT_DWSHW	T_SD360	Call-up on Components for SD3-60
RR_DWSHW	R_SD360	Components for SD3-60 Aircraft

The choice of the substitute file name is completely User-defined, however some system of naming convention is recommended. Note the above where the prefix letter is being used to match the original CAFAM file letter.

Obviously, the substitute files must exist in the same folder for CAFAM to use. Failure to find the file will leave CAFAM using the original report form files.