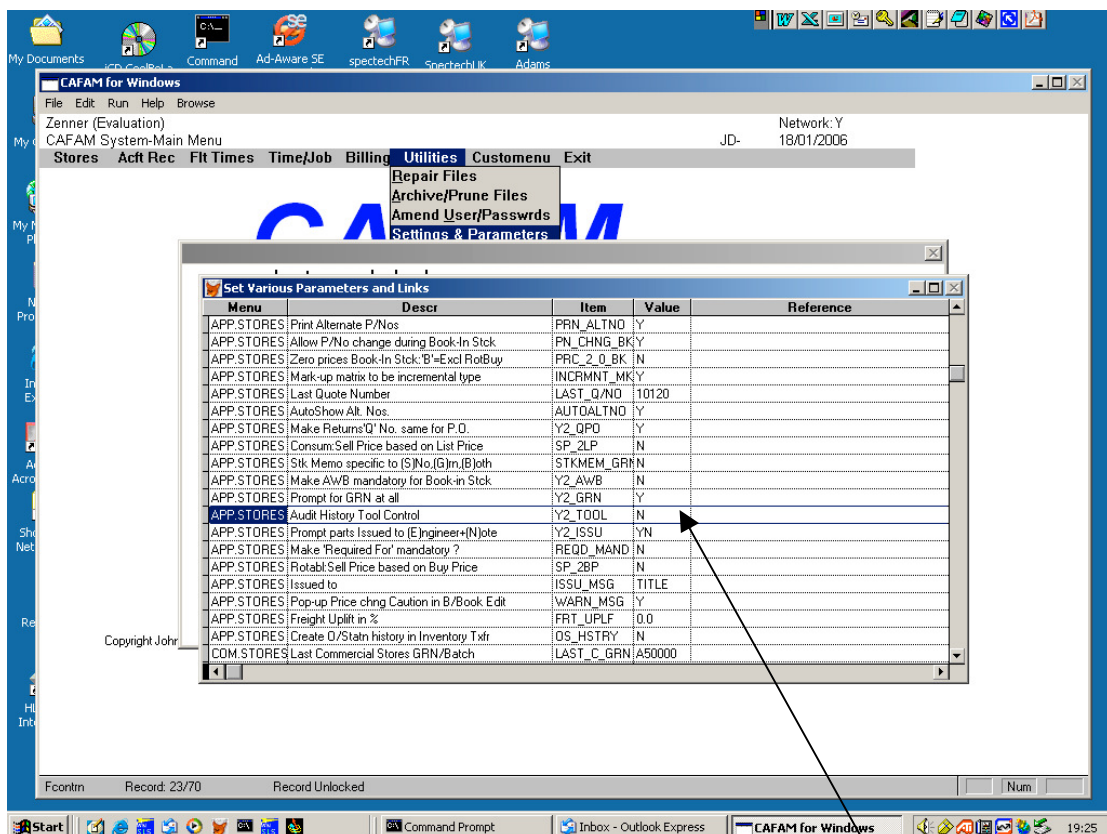
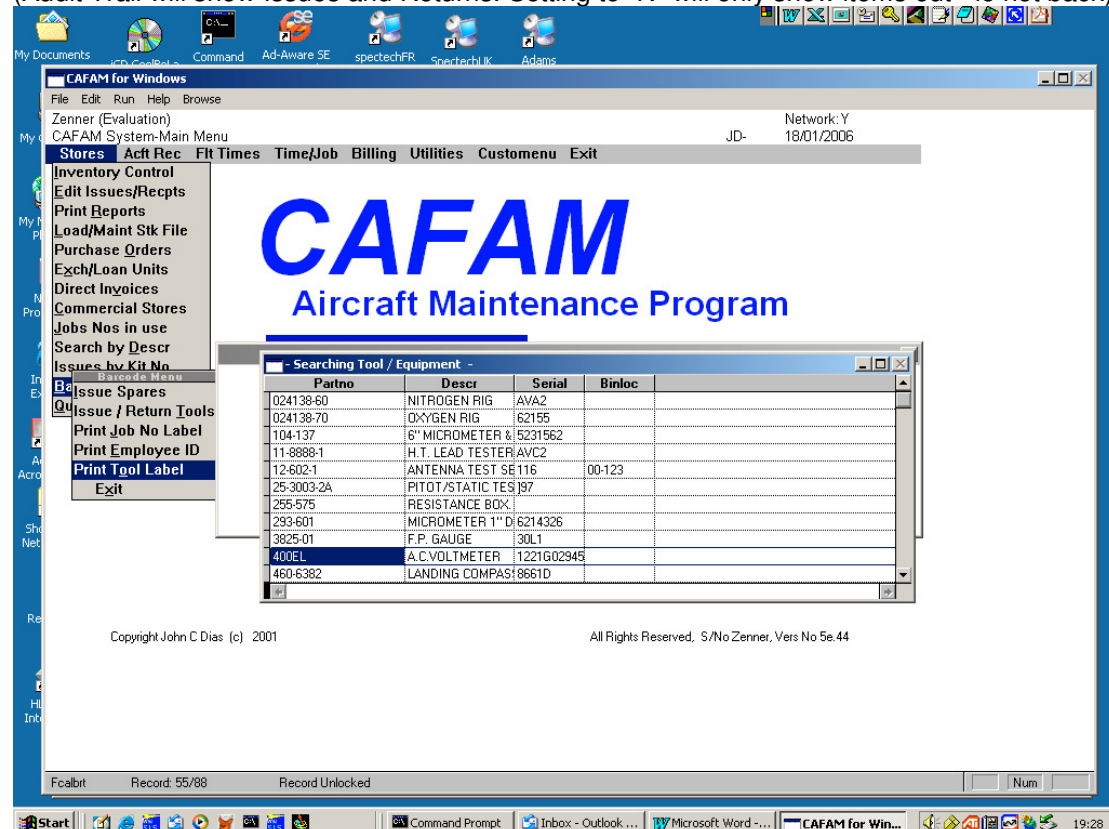


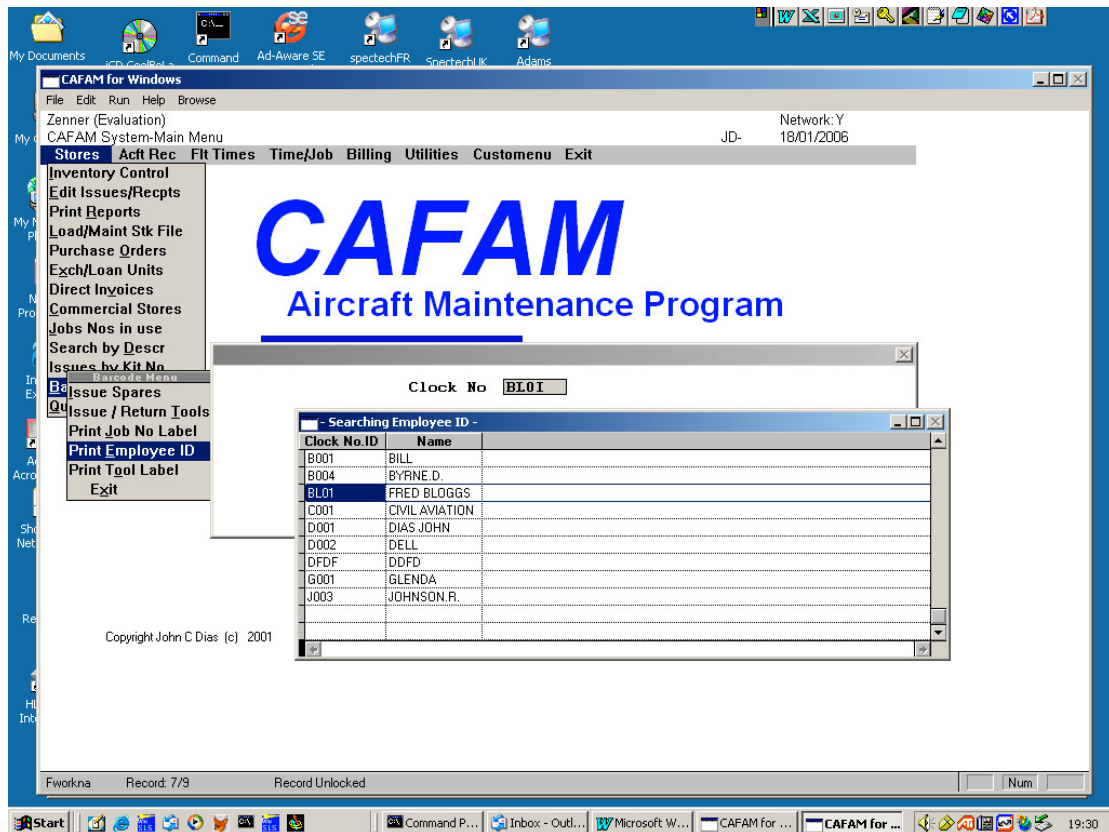
TOOL CONTROL



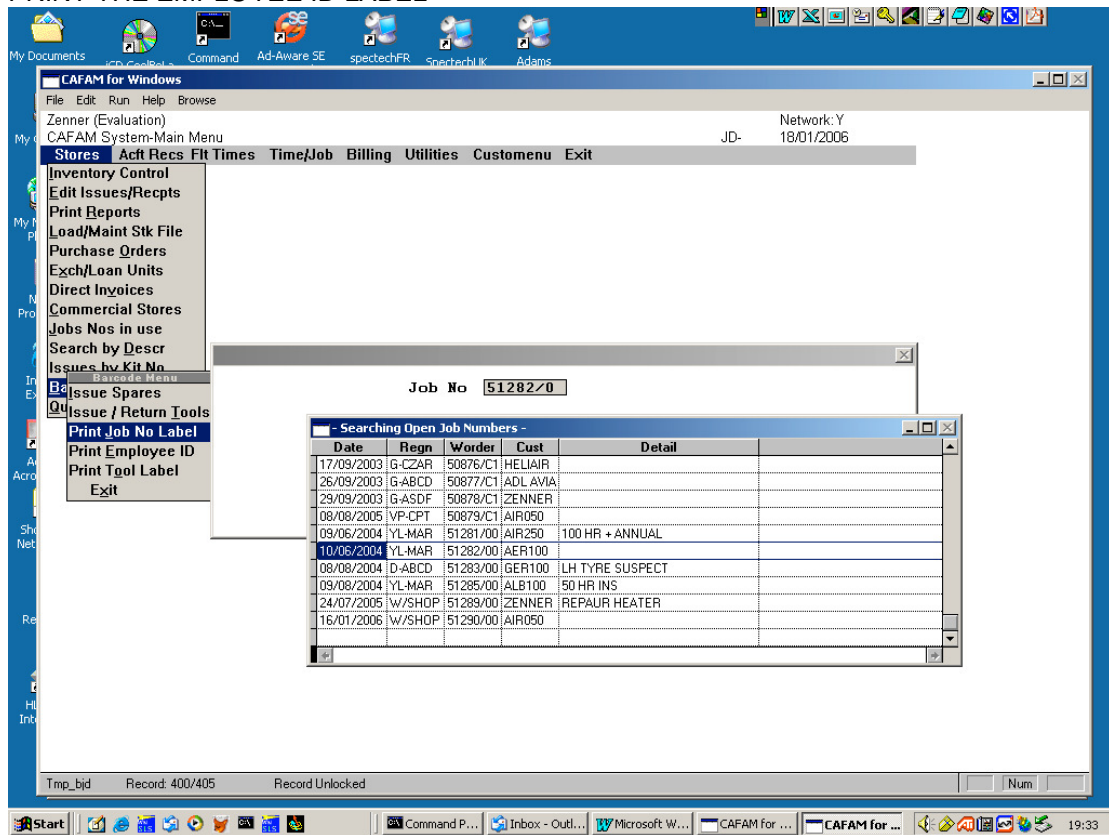
SET THE ABOVE FOR EITHER CREATING AUDIT TRAIL...OR NOT
(Audit Trail will show Issues and Returns. Setting to "N" will only show items out - ie not back)



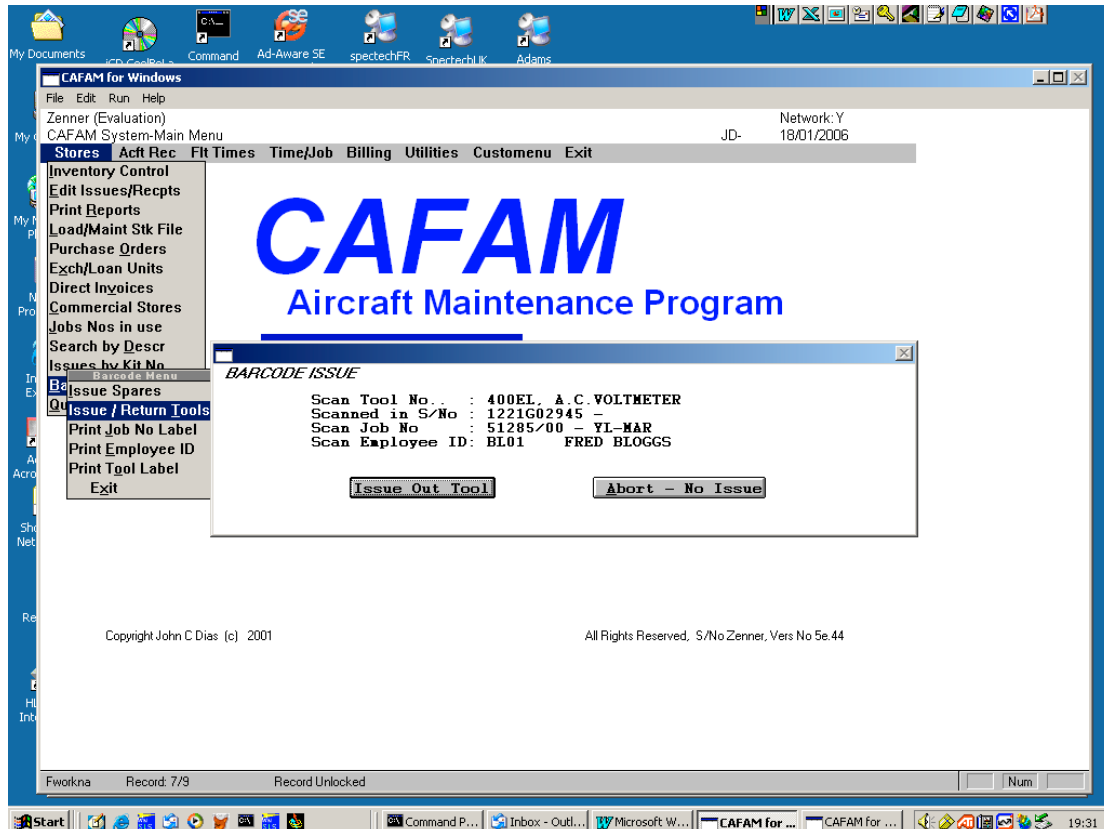
PRINT THE TOOL LABELS FOR USE WITH A BARCODE SCANNER



PRINT THE EMPLOYEE ID LABEL

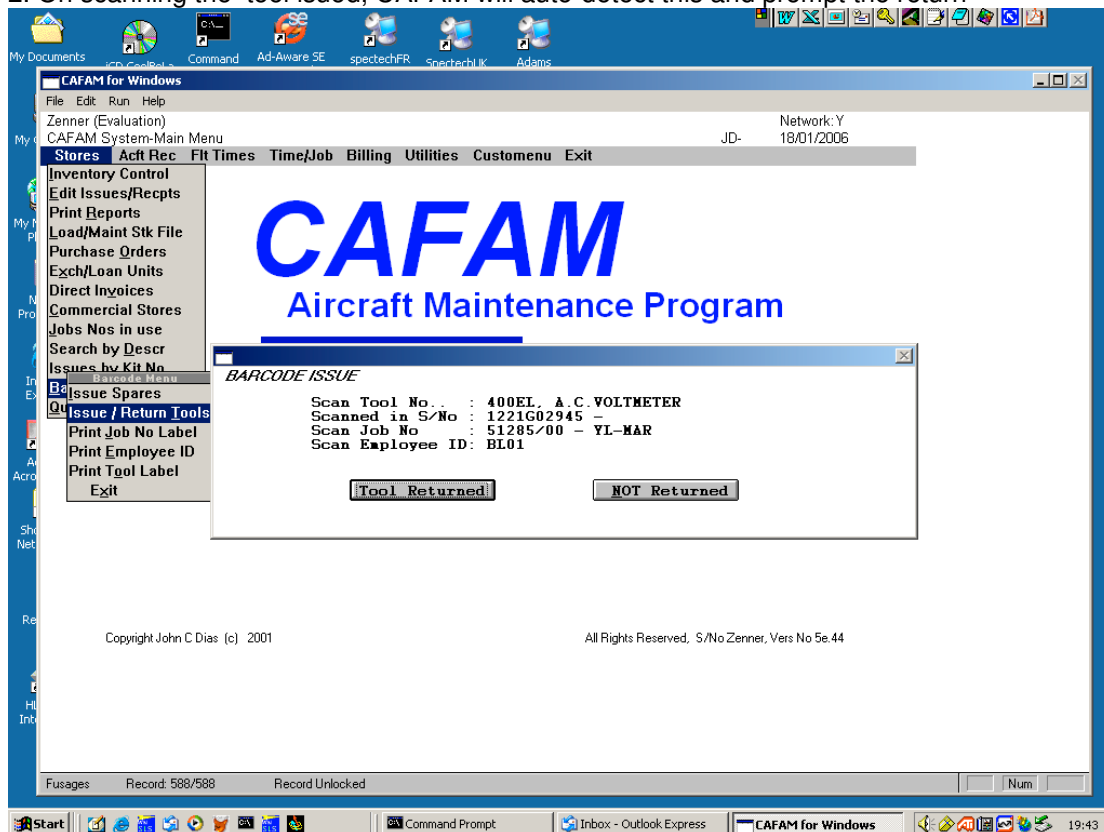


PRINT THE JOB LABELS



SCAN IN THE DATA AS SHOWN ABOVE USING THE LABELS PRINTED

- 1, The reason for using Labels is that there are no Drop Down Searches. CAFAM expects exact data entry here
2. On scanning the tool issued, CAFAM will auto-detect this and prompt the return



TOOL RETURNED