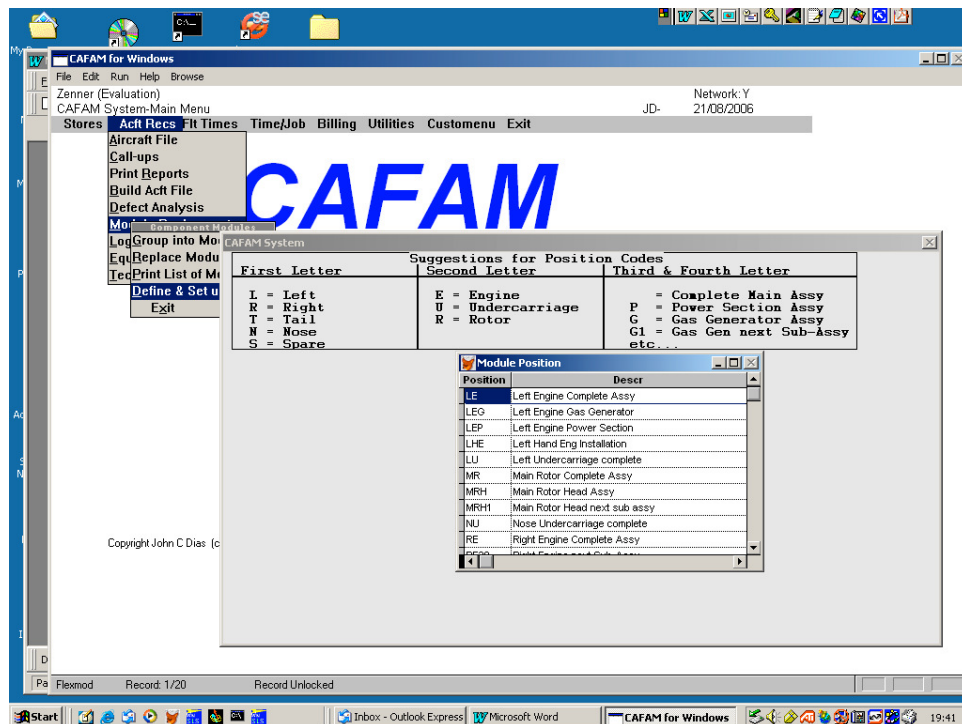


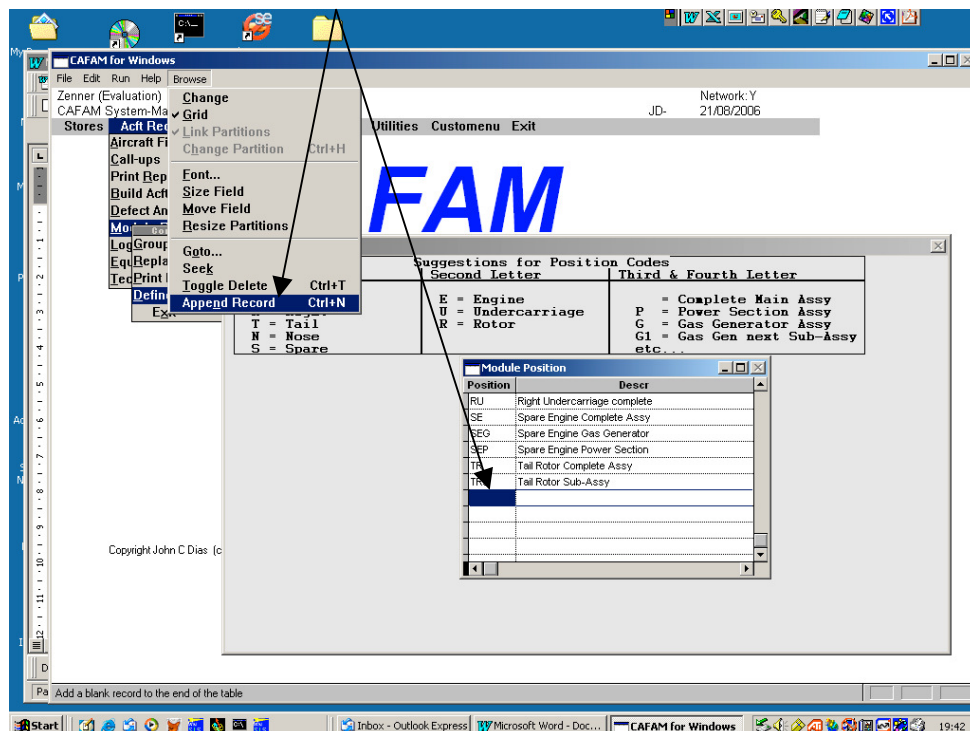
ADDING MODULE ASSEMBLYs

The "Position" of a Rotable is a 4-digit code which also acts as a Module location. The Pop-up table that allows you to select the Module Assembly during Component Control is entered from

- Acft Recs
- Module Replacement
- Define & Set-up Module



ADD NEW LINE/RECORD



Note our suggestions for the codes as shown above

-end-