

**CAFAM - TECH NOTES NO 5**  
**12 NOV 1998 (Rev 1 dated 01-Sep-2006)**

**39-NUMERIC OVERFLOW (data was lost)**

**1. Symptom**

The Program puts up an "Internal Error" with the above message quite unexpectedly when the System was known to be working perfectly correctly previously.

**2. Reason**

The reason for the numeric overflow error is due to some incorrect entry in one of the records in the Database being called. The incorrect entry will be in a field that holds numerical data and will contain a series of asterisks. Asterisks in the Data Field gets sometimes created due to a value entered that has inadvertently exceeded the width of the field limit and then causes this error usually a division by zero

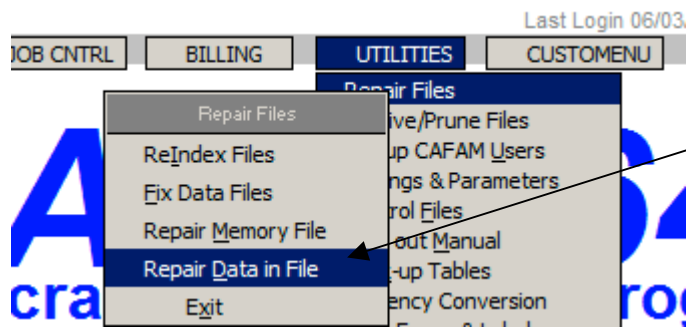
**3. Fix**

You need to identify which record is causing this problem. Try to print the file in question from the "Print Reports" so that the offending record is printed on the Screen within a report. Look for a series of asterisks "\*\*\*\*\*" in one of the Data fields. Once established, access this record from one of the Edit functions in the Program and change the value to the correct figure or enter a zero if appropriate.

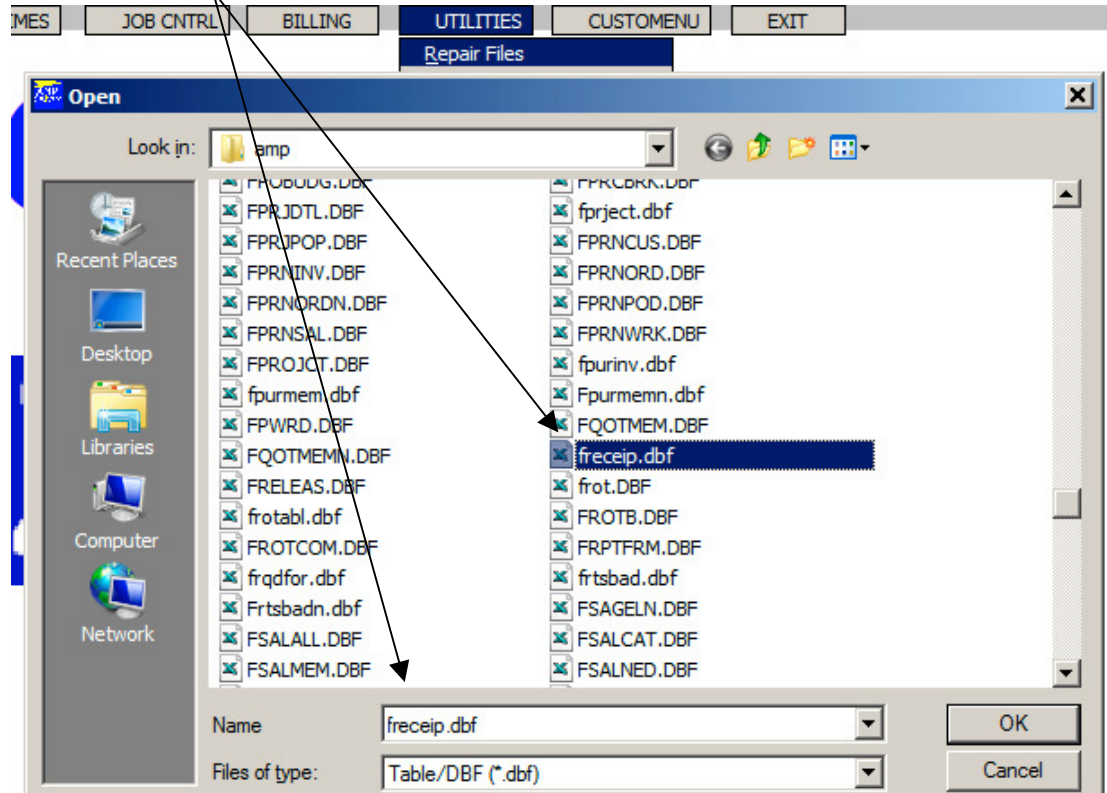
You could try and use the DBF database editor in Utilities (Repair Data in File) to access the file directly and change this value correctly. See attached Appendix for further details

-end-

## APPENDIX

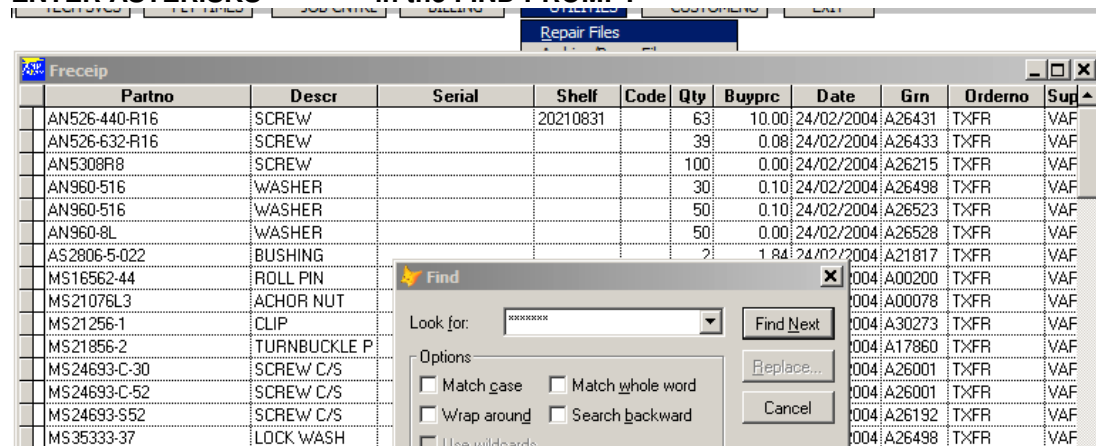


### SELECT THE FILE CAUSING THE ERROR



Proceed to search the Datafile for any record with asterisks "\*\*\*\*\*"

ENTER ASTERISKS - \*\*\*\*\* - in the FIND PROMPT



m-Main Menu

TECH SVCS

FLT TIMES

JOB CNTRL

BILLING

UTILITIES

CUSTOMENU

EXIT

Last Login 07/03/2021 19:05

JD-

08/03/2021

Repair Files

Freeceip

Partno	Descr	Serial	Shelf	Code	Qty	Buyprc	Date	Grn	Ordeno	Sup
MK22	LIFE JACKET*	2124115	20180701	JS	1	21.95	02/10/2008	D15369	13717	SKY
MK22	LIFE JACKET*	2124115	072018	JS	1	21.95	02/10/2008	D15369	13717	SKY
A52806-5-022	BUSHING *			JS	3	8.97	13/01/2009	D15781	14021	SAY
MK22	LIFE JACKET*	2124115	20190101	JS	1	9.03	06/02/2009	D15896	14177	SKY
C9500-10-20A	COMM SW *	547			1	439.49	27/02/2009	D10412	DEL21189	HUF
GE4503	LAMP				10	3.67	10/09/2009	D16025	10181	LIGI
ABC-123	BEARING				1		10/09/2009	D16026	10182	HUF
GE4503	LAMP				12	2.50	21/10/2009	D16027	10185	SAY
6660605-7	CLIP				1	113.43	21/10/2009	D16028	10186	CES
CDS-6150	OSCILLOSCOPE	150076	20220301		1	0.00	10/03/2020	D16031	10189	BAE
AP1234	A/PILOT COMP	112			1	959.49	10/03/2020	D16032	10184	HUF
SJ8591	TAPE				1	174.82	10/03/2020	D16033	10183	DIAI
MK22	LIFE JACKET	214101		JS	1	87.41	09/07/2020	D16036	10191	BAE
05-7150-F000904	LOOM	01151			1	70.00	19/09/2020	D16037	10194	SAY

IF OFFENDING LINE  
FOUND, CHANGE VALUE  
TO ZERO OR CORRECT