

GUIDANCE NOTES IN USING PARTS ISSUE PROGRAM

INTRODUCTION

The Parts Issue program has been written to supplement CAFAM data entry where parts could be easily and simply booked out of stores by the engineering staff using terminals located near the stores hatch. The process requires the User to

- a) log-on using their Clock Number
- b) entering their assigned pin number
- c) bar-code scanning or typing the Job no
- d) and scanning or typing the task number
- e) part number, grn (or serial) and qty

Helpful drop-down screens are provided to search on all of the above. Please see following pages for screen shots

SETTING-UP

1. No setting up is required other than printing the Bar Coded labels for the various scanned items above

Please contact us on support@cafam.net for any further information on this program

This program is marketed separately and costs **£1,495** available only on the full Network version of CAFAM

Thank You
01APRIL2017

DIRECT PART ISSUE PROGRAM



Log on Clock No Pin
Type '000' or 'QUIT' to close
Type 'REQ' to draw allocated Stock

Today is 07/08/2004

Copyright : John C Dias (c) 1999-2000

All Rights Reserved, S/No Zenner Vers No 4B

Prompt or Scan for Employee login Clock and Pin no. (set and assigned within CAFAM core program)



Parts Issue Program

Parts Issue to Job

Name: BILL

Job No: 51281/00 Task/Descr: 0202 /test for avionics

Log on Clock No: Pin:

Scan Part Number: GE-303. BULB

Scan GRN/Batch: E2139 LHR Qty Available: 23 LHR

Enter Qty to Iss: 1

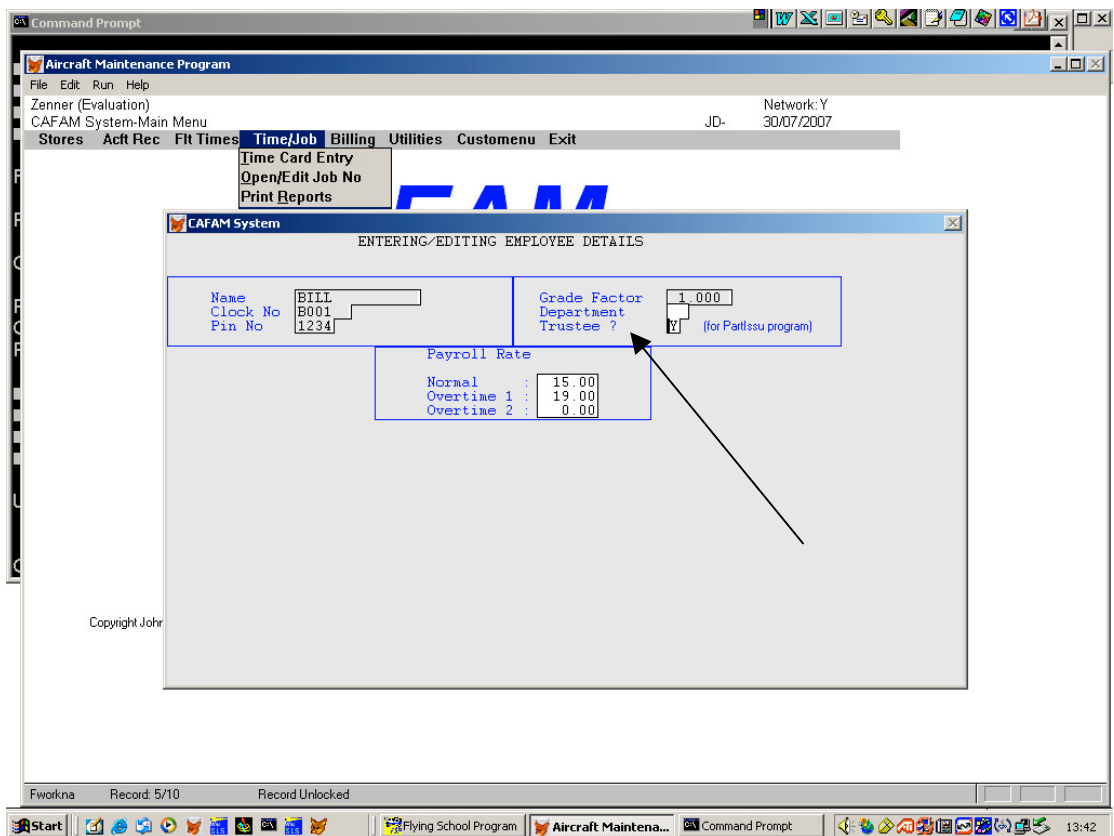
Total on Job 51281/00 (Includes Commercial Items)	Buy Price 117.65	Sell Price 155.97
Total this item issued	1.09	122.00

1. Prompt or Scan for Job No
2. Prompt Task using pop-up if Task validation="Y" or free text allowed
3. Prompt or Scan Partno, Grn or Serial No
4. Enter Qty to issue to Job & Task

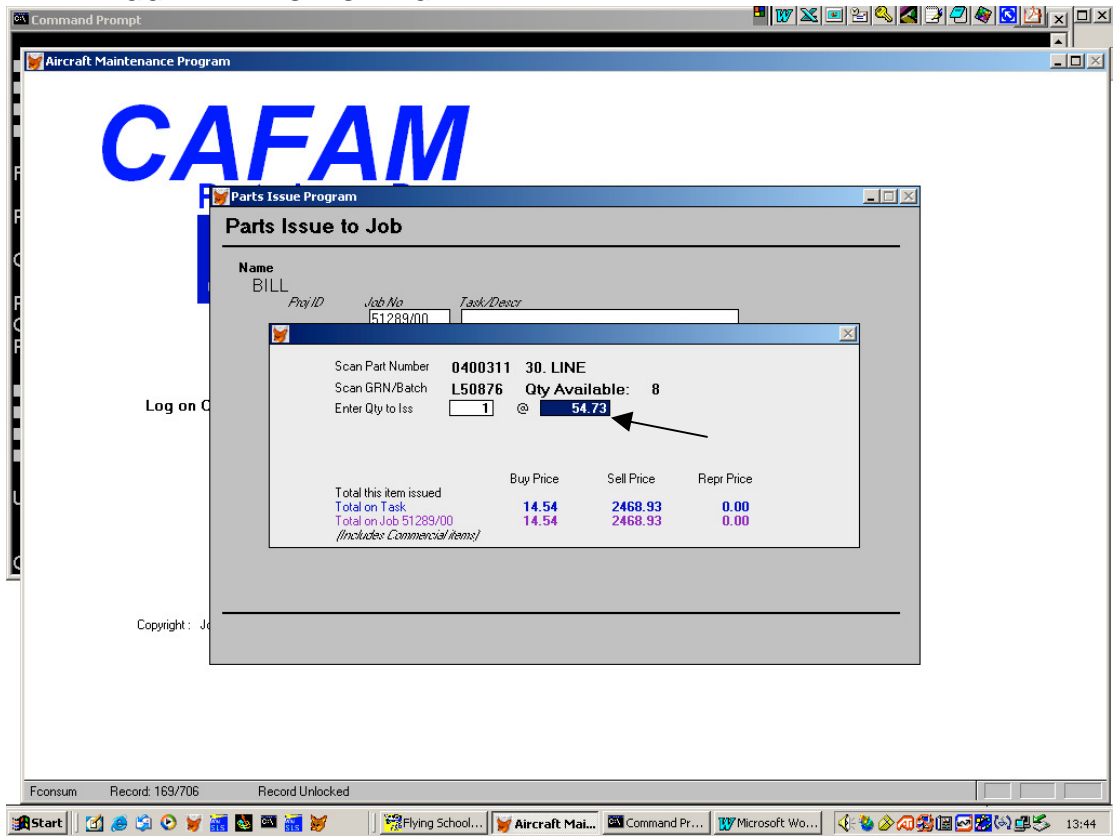


CAFAM prints a miniature label 2" x 1" with Part No. Descr, Qty and GRN so that the mechanic can affix this directly on the Workpack. It saves on the need for a hand written text.

SETTING TRUSTEE (FOR PART ISSUE PROGRAM) IN CAFAM



WILL TRIGGER THE FOLLOWING



TRIGGERS SELL PRICE, DISPLAYS BUY PRICE