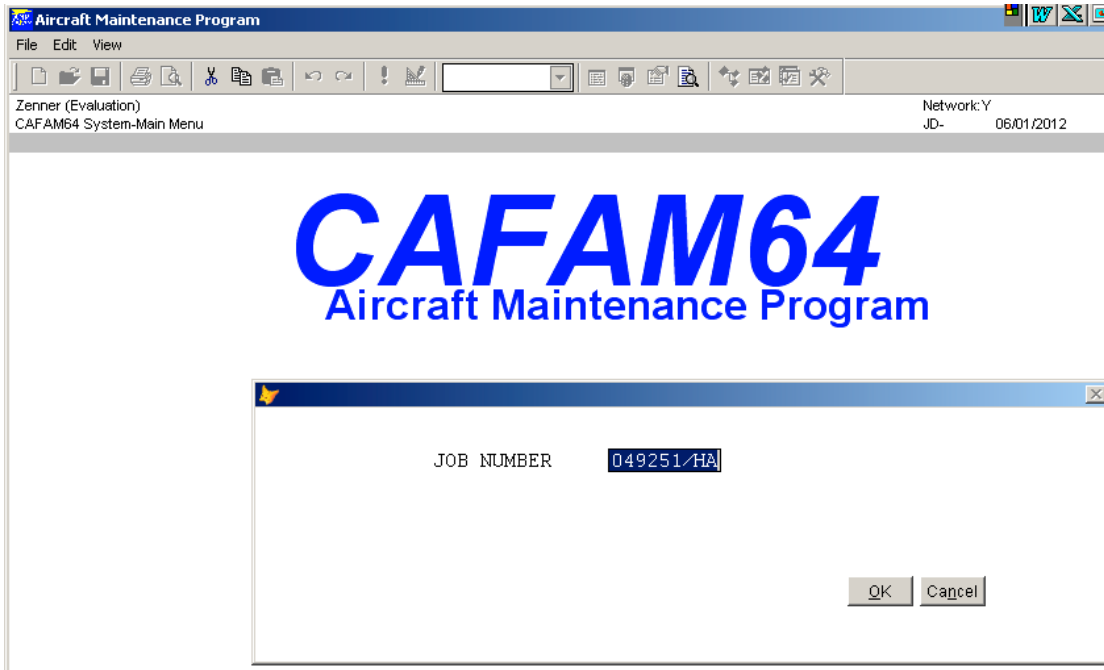


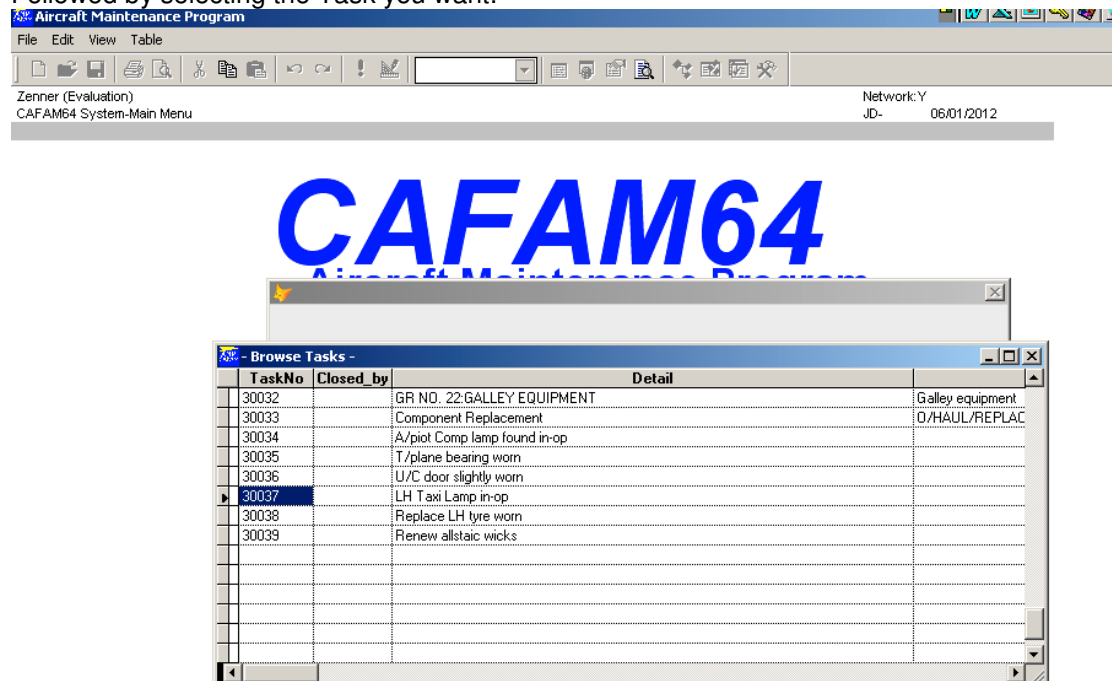
## CAFAM TASK PROGRAM – RAISING PARTS REQUISITIONS

When the CAFAM Task Program is running, there is a button option [REQS] that raises Parts Requisitions which can as an option be printed directly in to the Stores on a networked printer:

After you have logged into the CAFAMTSK.EXE program, you enter the Job Number:



Followed by selecting the Task you want:



Whereupon the screen will display the following

Job No 049251/HA Item 30037 12/05/2011 Est. Man-hrs 0.00 Trade

X-Ref

Descr LH Taxi Lamp in-op

ATA

Rectifo

Opened\_by JD

Edited\_by

Closed\_by

Exit Edit I-Card Browse Notes Prev Next Reqs WSheet AddTsk

WorkCtrl

On Selecting REQS, you proceed to enter the details of the Part being requisitioned as detailed:

Job No 049251/HA Item 30037 12/05/2011 Est. Man-hrs 0.00 Trade

X-Ref

Descr LH Taxi Lamp in-op

ATA

Opened\_by

**PARTS REQUISITIONS**

Part No GE4503 Qty in Stk 15

Descr LAMP

Qty Reqd 1

Condition NE

Delivery

Task 30037

IPC Ref 33-12-01

Requested by JD

Out Station

Requisition Status

☒ Normal ☒ Normal

☐ Urgent ☐ Exchange

☐ Critical ☐ Loaner

☐ AOG ☐ Warranty

Notes

OK Exit

NOTE: THE QTY IN STK DISPLAYED

Copyright John C Dias (c) 2001-2012

All Rights Reserved. S/No Zenner, Vers No 5f.13

Once you accept the details on clicking [OK]

IPC Ref 33-12-01

Requested by JD

Out Station

**Create above Req**

OK Cancel

You then proceed to the following:

**DONE - Item Requisitioned 12350/R**

Delivery Task 30037

IPC Ref 33-12-01

Requested by JD

Out Station

**Created above Req**

PrintReq Cancel

You now have the option to print the Requisition as shown below to a Networked printer in the Stores:

Zenner (Evaluation)  
 Printed 06/01/2012 @ 12:08:17

## REQUISITION NOTE

Aircraft **G-ABCD**

Job No. **049251/HA**

Page 1

PRINTED BY:JD ON 06/01/2012 AT 12:08:17  
 THE FOLLOWING ITEMS ARE REQUIRED FOR THE ABOVE

ReqNo	Date	Task	Part Number	Description	Qty Requestd	Balance Needed	Qty in Stock	Requested By
12350/REQS TaskNo 30037	06/01/2012	30037	GE4503 Bin Loc:02A02,01D14,	LAMP	1	1	15	JD

NOTE: The note shows the Bin Location

In addition you have the option on one of the buttons to see all items "On Order" on the Job Number (Including Stock):

Job No 049251/HA Item 30037 12/05/2011 Est Man-hrs 0.0

### PARTS REQUISITIONS

Part No  
 Descr  
 Qty Reqd  
 Condition  
 Delivery  
 Task  
 IPC Ref  
 Requested by  
 Out Station

OK

Edit

Print

Orders

Exit

As follows:

Purchase Orders on Requisition 049251/HA									
ReqNo	Date	Task	Partno	AltPno	Descr	Qty Reqd	On Order	In Stock	P_orders
12350/REQS	09/07/201	00041	ABC-123		BEARING	1	9	3	10190/9,
12350/REQS	09/07/201	00041	AN960-516		WASHER	1	0	68	
12350/REQS	09/07/201	00041	GE303		LAMP	1	0	0	
12350/REQS	06/01/201	30037	GE4503		LAMP	1	2	15	10181/2,
12350/REQS	09/07/201	30038	02-0527-0132		JACK ATR NOS	1	0	0	
12350/REQS	09/07/201	30038	066-3063-00		ADF INDICATR	1	0	3	
12349/REQS	12/05/201	50005	GE-4550		LAMP	1	0	0	

-end-