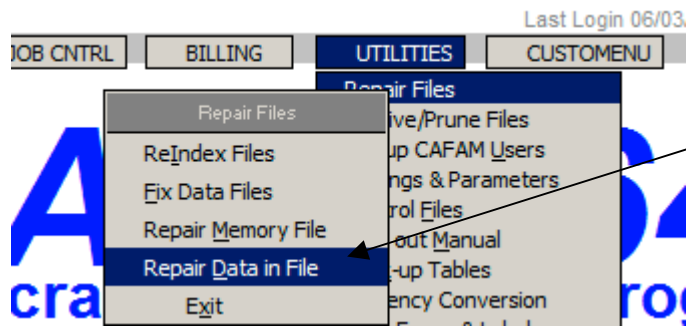
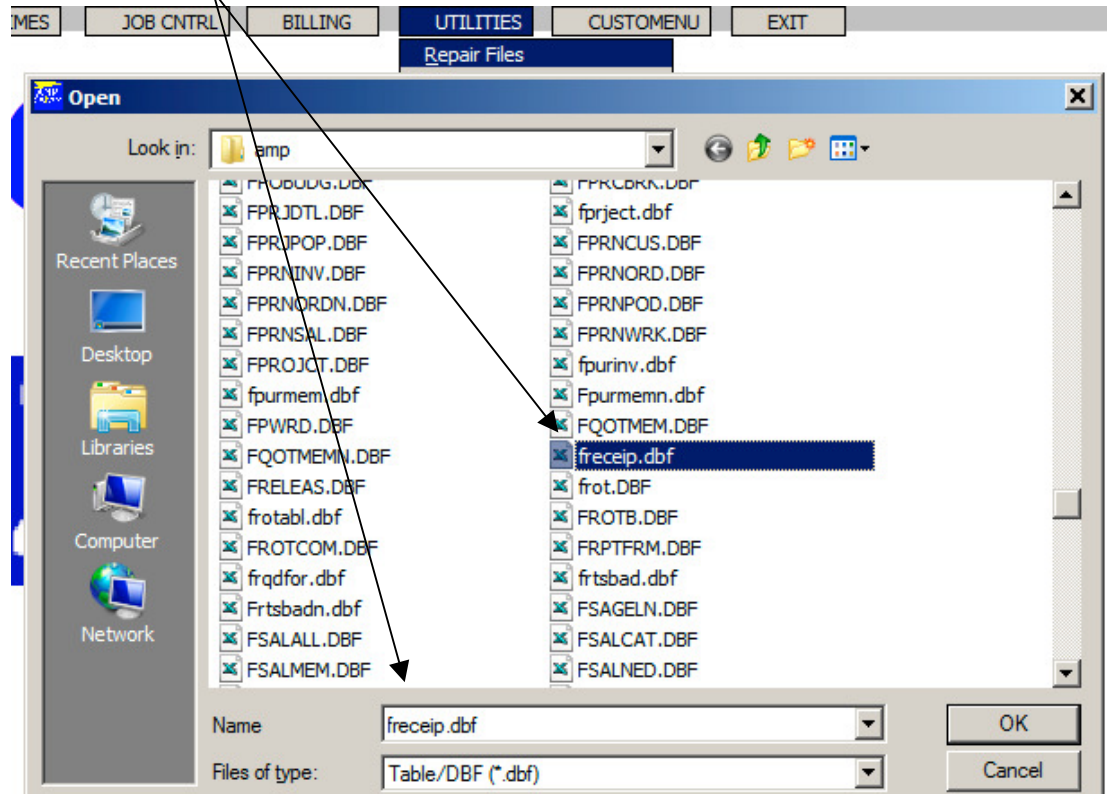


## LOCATE NUMERIC OVERFLOW RECORD

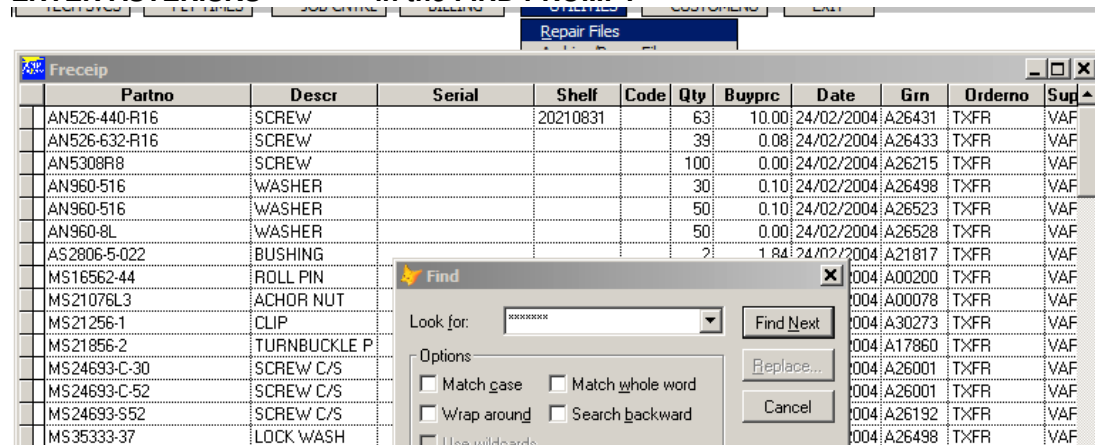


## SELECT THE FILE CAUSING THE ERROR



Proceed to search the Datafile for any record with asterisks "\*\*\*\*\*"

ENTER ASTERISKS - \*\*\*\*\* - in the FIND PROMPT



m-Menu		Last Login 07/03/2021 19:05		JD		08/03/2021				
TECH SVCS	FLT TIMES	JOB CNTRL	BILLING	UTILITIES	CUSTOMENU	EXIT				
				Repair Files						
Freeceip										
Partno	Descr	Serial	Shelf	Code	Qty	Buyprc	Date	Grn	Orderno	Sup
MK22	LIFE JACKET*	2124115	20180701	JS	1	21.95	02/10/2008	D15369	13717	SKY
MK22	LIFE JACKET*	2124115	072018	JS	1	21.95	02/10/2008	D15369	13717	SKY
A52806-5-022	BUSHING *			JS	3	8.97	13/01/2009	D15781	14021	SAY
MK22	LIFE JACKET*	2124115	20190101	JS	1	9.03	06/02/2009	D15896	14177	SKY
C9500-10-20A	COMM SW *	547			1	439.49	27/02/2009	D10412	DEL21189	HUI
GE4503	LAMP				10	3.67	10/09/2009	D16025	10181	LIGI
ABC-123	BEARING				1		10/09/2009	D16026	10182	HUI
GE4503	LAMP				12	2.50	21/10/2009	D16027	10185	SAY
6660605-7	CLIP				1	113.43	21/10/2009	D16028	10186	CES
COS-6150	OSCILLOSCOPE	150076	20220301		1	0.00	10/03/2020	D16031	10189	BAE
AP1234	A/PILOT COMP	112			1	959.49	10/03/2020	D16032	10184	HUI
SJ8591	TAPE				1	174.82	10/03/2020	D16033	10183	DIAL
MK22	LIFE JACKET	214101		JS	1	87.41	09/07/2020	D16036	10191	BAE
05-7150-F000904	LOOM	01151			1	70.00	19/09/2020	D16037	10194	SAY

IF OFFENDING LINE  
FOUND, CHANGE VALUE  
TO ZERO OR CORRECT