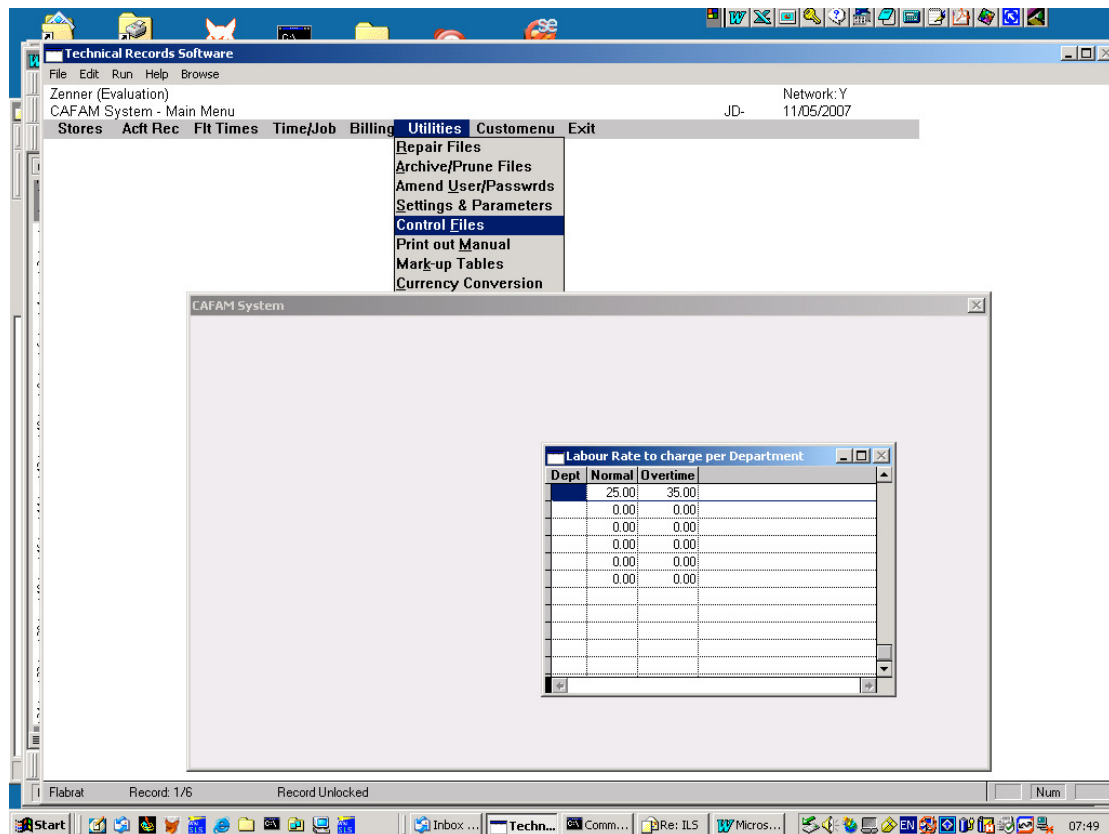
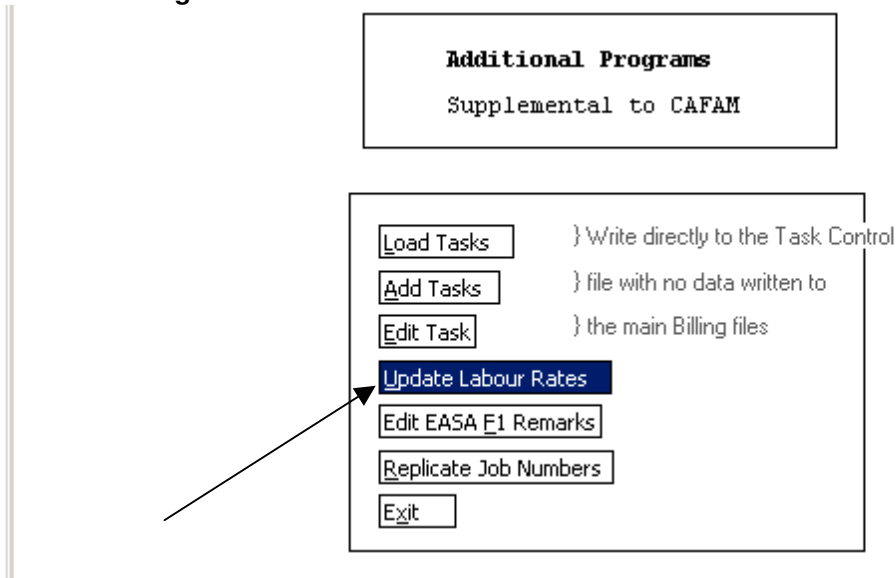


## CHANGING LABOUR RATES GLOBALLY

First set the Default labour Rate here

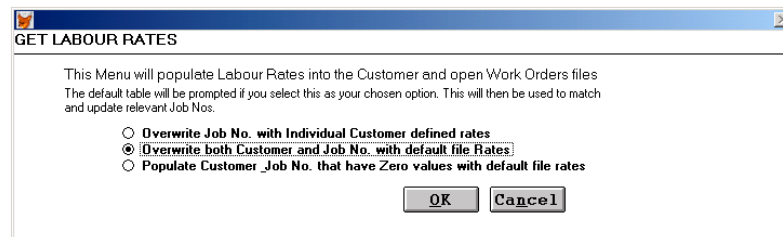
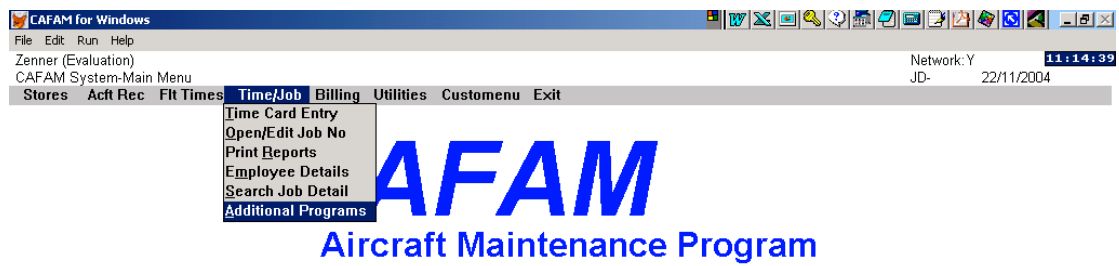


Select "Additional Programs" as below



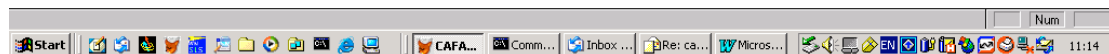
And the option for Update Labour Rates

**This option will over-write your files**



Copyright John C Dias (c) 2001

All Rights Reserved, S/No Zenner, Vers No 5e.28a



## **CAUTION:**

**This option WILL overwrite all Open Job with this new rate, as well as applying it to the Customer Database profile**

