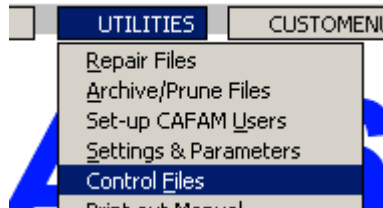


## SETTING UP DIFFERENT CERTIFICATION ON WORKSHEETS

This example will deal with setting up two different Certifications for Workpacks...EASA and FAA. Thus, when the Worksheet is printed, the program will automatically apply the correct Release Certification statement for the Work pack as appropriate. You can have more than two, but for the purpose of these notes, only these two will be discussed

### A. SET-UP THE RELEASE STATEMENTS

1. First set up the Certification Statement (if not already done previously) from UTILITIES>CONTROL FILE



Where you go through all the various control files by pressing ESC until you see the one that says



This will be some 23 ESC's later !

2. On this screen, use PgDn / PgUp to locate the Page(s) that shows EASA as follows

A screenshot of the 'Edit/Entry Forms' window. The title bar says '- Edit/Entry Forms -'. The form content is as follows:  
Title: EASA  
Header: Y  
L1: Certificate of Release to Service  
L2: Certifies that work specified, except as otherwise specified was  
L3: carried out in accordance with Part-145 and in respect to that work the  
L4: Aircraft/Aircraft Component is considered ready for release to service  
L5:  
L6: Signature..... Authority..... Date.....  
L7: EASA APPROVAL NO: UK.145.00852  
L8:  
L9:  
L10:  
L11:  
L12:  
Footer: Y  
Heading: EASA-WORKSHEET CERTIFICATION  
Release: W  
An arrow points from a text box 'Enter you Approval No here' to the text 'UK.145.00852' in line L7.  
Another arrow points from the 'Release' field to the text 'W'.

If you do not find one saying EASA, then create a Blank Page using CTRL+Y and enter the Text as shown above. Note that "Release" must contain the letter "W"

3. Proceed to locate the one for FAA (or any other Release Statement required). Enter the release Statement as required .e.g.

**Edit/Entry Forms -**

**Title** FAA

**Header** Y

**L1** Certificate of Release to Service

**L2** Certifies that work specified, except as otherwise specified was

**L3** carried out in accordance with FAR-145 and in respect to that work the

**L4** Aircraft/Aircraft Component is considered ready for release to service

**L5**

**L6** Signature..... Authority..... Date.....

**L7** FAR APPROVAL NO: BX12-12

**L8**

Don't's forget the "W" for Release at the bottom

**Footer** Y

**Heading** FAR-WORKSHEET

**Release** W

This completes the setting up process for the Release Certification Statement to print on the Worksheet/Workcard

## B. CONNECTING THE RELEASE STATEMENT TO THE AIRCRAFT FILE

1. When creating an Aircraft in the Add/Edit Aircraft menu

**RIALS** **TECH SVCS** **FLT TIMES**

**Aircraft File**

**Aircraft File**

Update Hours

Component Control

Satisfy/Extnd/Vu C/ups

Aux Unit-(APU,HTR etc)

**Add/Edit Aircraft**

One of the prompts on the screen requires you to choose the "W/Sheet Cert" i.e.

**CAFAM System**

<b>A'cft</b>	G-ABCD	<b>Owner</b>	DAS160	<b>Hrs New</b>	554.00	<b>Current at</b>	
<b>Type</b>	CESSNA 560XL	<b>Unit</b>	5699	<b>Landing</b>	635		06/07/2009
<b>Serial</b>	-5699	<b>YrManf</b>	2007	<b>Cycles</b>	635	<b>Fatg.tm</b>	0

<b>NO 4</b>		0.00	0	0.00	0
<b>PrpTyp</b>				<b>W/sheet Cert</b>	EASA
<b>S/No 1</b>		0.00	0	<b>A/pilot Cat</b>	1
<b>No 2</b>		0.00	0	<b>RVSM ? Y/N</b>	

Enter as appropriate to the Aircraft Registry e.g. EASA for European Aircraft and FAA for USA

<b>A'cft</b>	N200NM	<b>W/sheet Cert</b>	FAA
<b>Type</b>	CESSNA F40	<b>A/pilot Cat</b>	1

2. The choice of this Release is also prompted when you open a Work Order.

CAFAM System			
Job No	049258/HA	Acft	N200NM
Account	BANAVIA	Status	JOB OPEN
Customer	Banavia Airline		
Cust O/n	6171	Cert	FAA
Details	TAXI LAMP U/S		
Our Ref			

This basic setting up is all that is required. From hereon printing Worksheets will apply the Release Certification Statement set up in Step A appropriate to the Aircraft e.g.

[illegible]

-end-