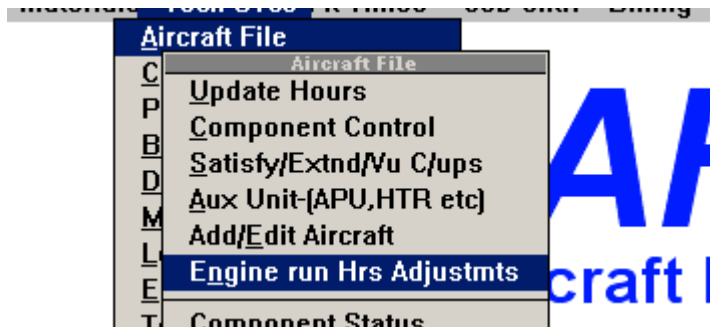


ADJUSTING ENGINE HOURS/CYCLES WHEN DIFFERENT TO AIRCRAFT COUNT

The program allows for variances in the Engine Hours/Cycles when different to the Aircraft. Select the following sub-menu:



The following screen comes up after you enter the Aircraft Regn:

The screenshot shows the 'CAFAM System' window. It contains a table with aircraft details and a section for engine adjustments.

A/cft	N200NM	A/P Cat	1	RVSM?	Y	Hrs New	2114.4	Current at
Type	CESSNA 560XL	Owner	BANAVIA			Landing	2101	13/07/2009
Serial	-5215	Unit	5215			Cycles	2087	Fatg.tm 0
		YrManf	2001					

Adjustments to Engine Hrs/Cyc following Maintenance (Ground Runs etc)

Type	PW545A	Since O/H		Since New	
		Hrs	Cycs	Hrs	Cycs
S/No1	DB0441	0.0	0	2114.4	2087
S/No2	DB0456	0.0	0	2114.4	2087
S/No3		0.0	0	0.0	0
S/No4		0.0	0	0.0	0

S/No Adjustment to Hrs Cycles

Position of Components range FROM TO

OK Cancel

- Select the Engine No e.g. No. 1 of No. 2
- Enter the adjustment in Hrs / Cycs (as applicable)
- Enter the Range of Component that will need to be updated e.g. "LE" to "LE" might imply Left Engine where this was how it entered here during Component Installation

The screenshot shows the 'Installed Component' window. It contains a table with component details.

P/No	30H3152	Ftd on	16/12/2001	Owner	
Descr	T/DISC STG 2	Job No		Code	
S/n ON	68B457	Positi	LE	Manf	
GRN		DfctNo		ATA	72- -